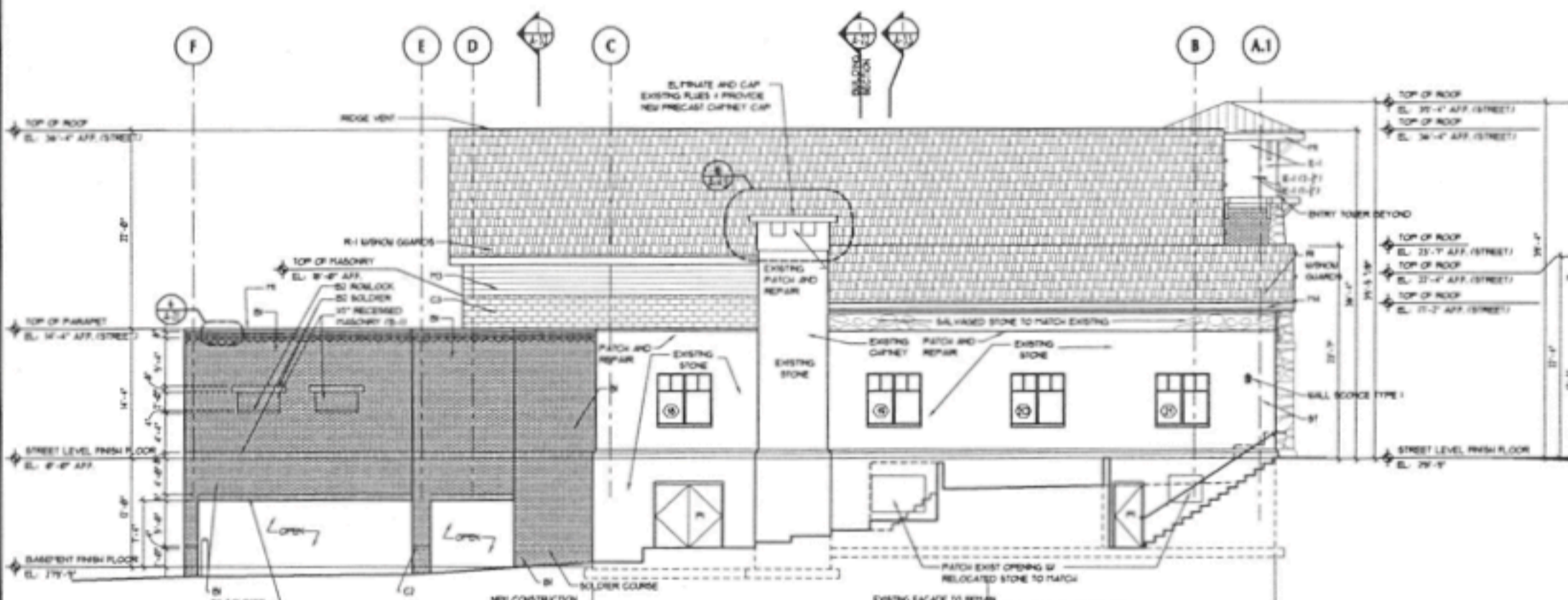
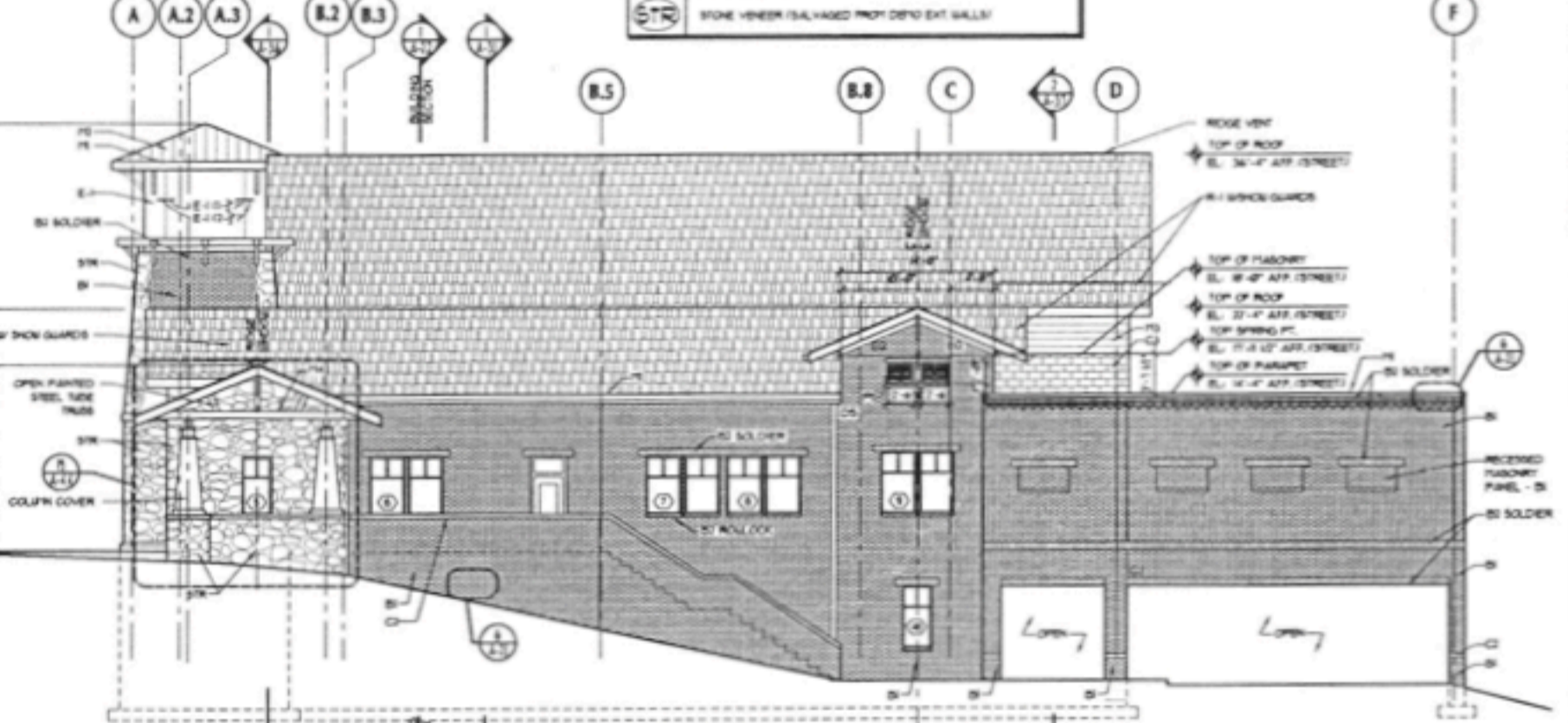


1 NORTH ELEVATION
18' x 7'-0"

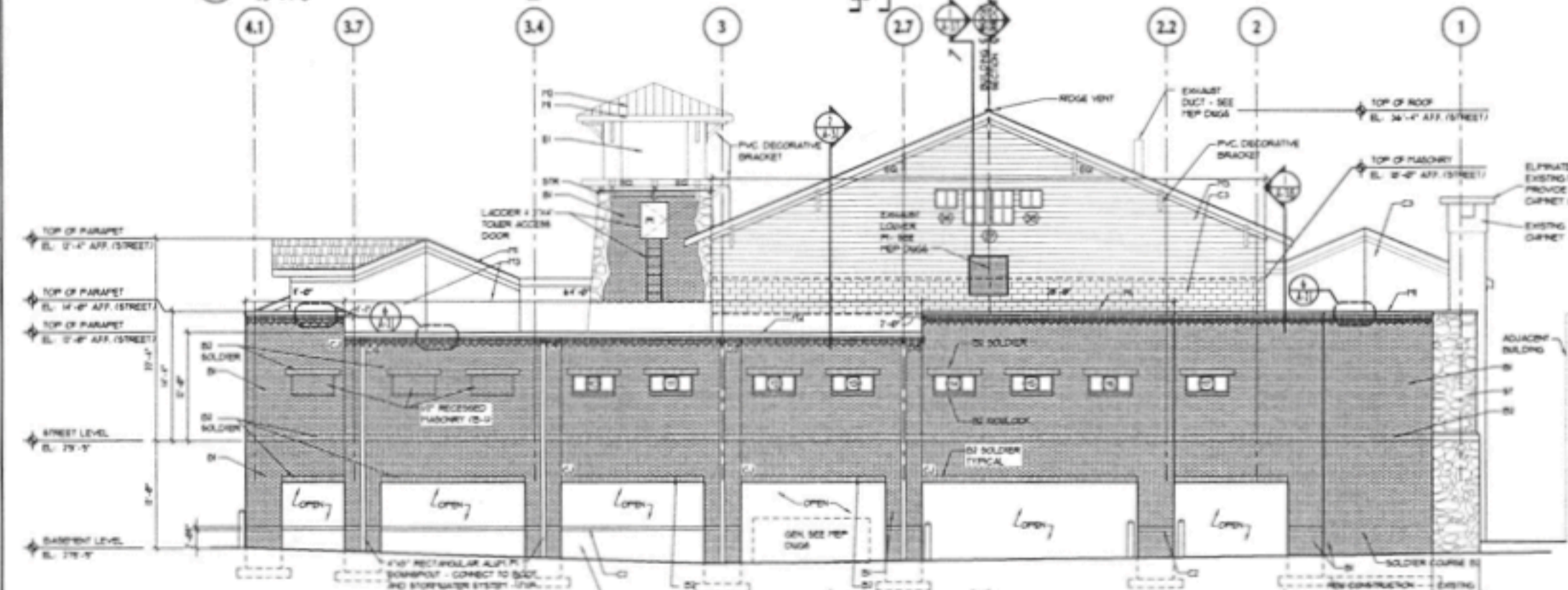
EXTERIOR FINISH LEGEND	
(B-1)	BRICK TAYLOR 31 RED UNGLAZED CORNER/RED VENEER UNGLAZED
(B-2)	BRICK TAYLOR 31 RED ROOFFACE CORNER/RED ROOFFACE
(C-1)	CAST CONCRETE BASE TO MATCH EXISTING SPEC. 8" x 4" CHAMFER TO MATCH EXISTING COLOR: TO MATCH EXISTING
(C-2)	CAST CONCRETE CAP ON BELL SPEC. SLOPED BELL COLOR: TO MATCH EXISTING
(C-3)	AREA CONCRETE FLASHING UNIT - SUPREME SPEC. 8" x 4" SMOOTH FACE RED - 148 - 248
(C-4)	EXPANDED CONCRETE SPEC. 8" x 4" SMOOTH FINISH COLOR:
(E-1)	EPS SPEC. NET NATURAL WHITE
(E-2)	EXTERIOR WALL SOURCE - WALL POINTED SPEC. FACE ILLUMINATION PATTERN 1991-1999-5-082-647 BRICKS
(E-3)	EXTERIOR WALL SOURCE - CEILING POINTED POINT SPEC. FACE ILLUMINATION PATTERN 1991-1999-5-082-650 BRICKS
(L-1)	POSTER LIGHT SPEC. ELDFP48 1-30-1-26 1/2" ACES 24" 30W 80V COLOR: WHITE
(L-2)	ALUMINUM CORNER FLASHING UNIT FASCIA SPEC. PRE-FINISHED COLOR: WHITE
(M-1)	FLASHING BELT METAL ROOF SPEC. PRE-FINISHED COLOR: PAC-COLOR PATINA GREEN
(M-2)	ALUMINUM BOND ALCOA TRADITIONAL SELECT SANDSTONE
(M-3)	8" METAL GUTTER + DOWNPOUT SPEC. PRE-FINISHED ALUMINUM COLOR: WHITE
(P-1)	PAINT METAL DOOR TO MATCH ADJACENT SURFACE SPEC. SEE SPECIFICATIONS COLOR: TO MATCH ADJACENT SURFACE
(R-1)	ASPHALT SHINGLES - CERTAINTED 30-YEAR SPEC. SEE SPECIFICATIONS COLOR: COLONIAL SLATE
(C-7)	48" CLOCK - ELECTRIC TIME SPEC. STYLE 3488 ROUND ILLUMINATED FLUSH COLOR: WHITE
(T-1)	TYPICAL
(S-1)	STONE VENEER (SALVAGED) MOUNTED ON EXT. GULLY



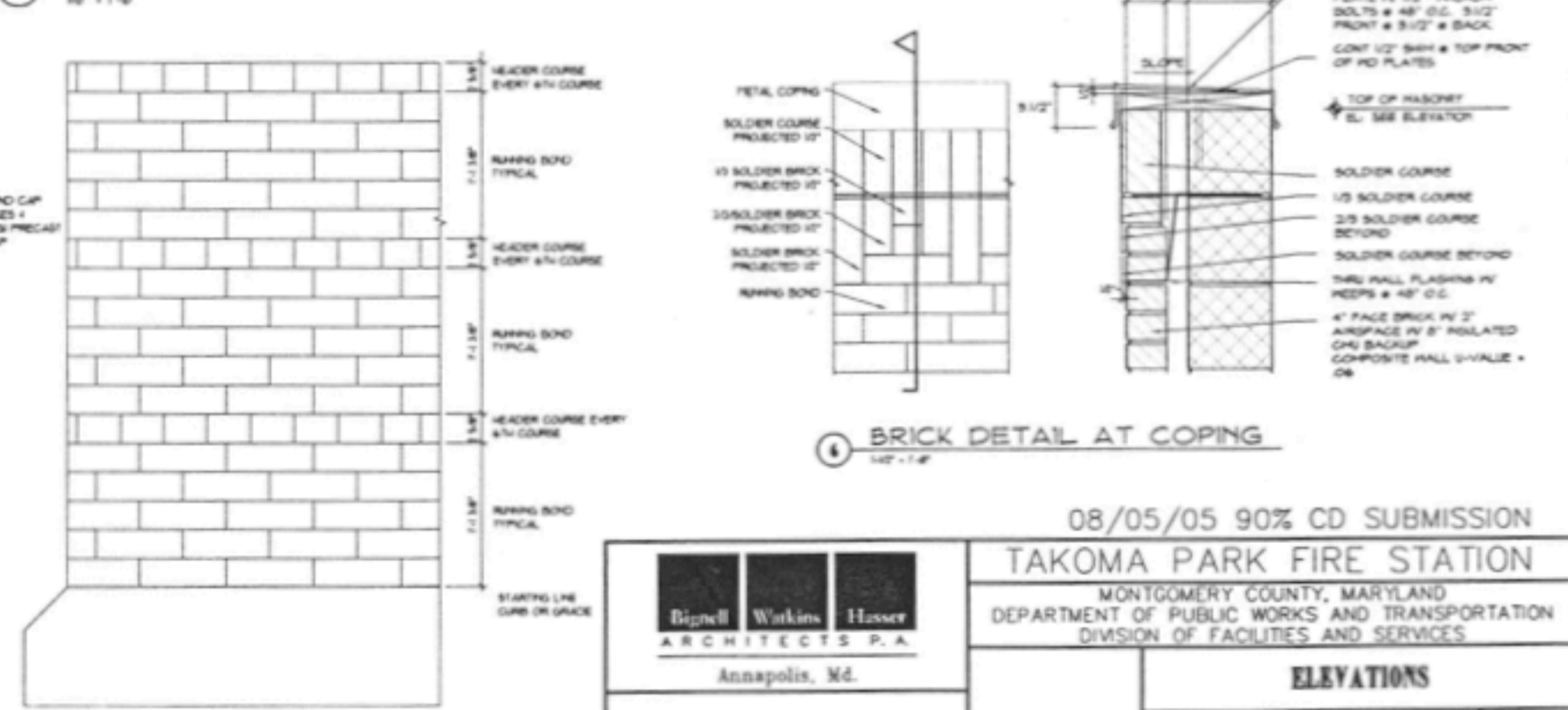
2 EAST ELEVATION
18' x 7'-0"



3 WEST ELEVATION
18' x 7'-0"



4 SOUTH ELEVATION
18' x 7'-0"



5 TYP. FIELD BRICK COURSING (COMMON BOND)
14" x 7'-0"

08/05/05 90% CD SUBMISSION
TAKOMA PARK FIRE STATION
MONTGOMERY COUNTY, MARYLAND
DEPARTMENT OF PUBLIC WORKS AND TRANSPORTATION
DIVISION OF FACILITIES AND SERVICES

ELEVATIONS

Michael Hackley Architects
Annapolis, Md.

SCALE: 1/8" = 1'-0"
DATE: 10/08/04

ARCHITECTS: R.A. BIGNELL, W. WATKINS, H. HASSER
ARCHITECTS P.A.
2841 RIVA ROAD, SUITE 1030
ANNAPOLIS, MD 21403
PHONE: 410-291-1100
FAX: 410-291-1101
WWW.MHA-ARCHITECTS.COM

PROJECT NO: 05-001
DRAWING NO: A-2.1